

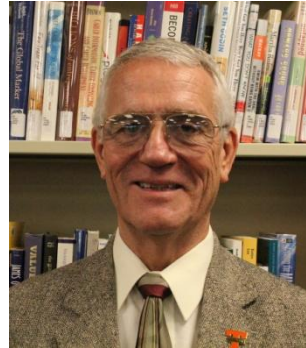
Faces of Student Services

Knoxville

Services:

- Academic Advising
- Account Information
- ARCHES Program
- Books/Bookstore
- Disability Services
- Sakai Tutorials
- Student ID cards
- Syllabus Information
- Testing Services
- Tutoring/Workshops

Student Support Services Center
is open Monday-Friday, 9 am-6 pm
gpsstudenthelp@tusculum.edu



Staff:

- Ryan Otto, *Director*
 - (865) 693-1177, ext. 5031
 - rotto@tusculum.edu
- Tom McKay,
 - *Assistant Director/Academic Coordinator*
 - (865) 693-1177, ext. 5020
 - tmckay@tusculum.edu
- Lora Bryant,
 - *Coordinator of Academic Advising*
 - (865) 693-1177, ext. 5010
 - lbryant@tusculum.edu
- Sharon Shanks, *Academic Advisor*
 - (865) 693-1177, ext. 5043
 - sshanks@tusculum.edu
- Kim Bloomfield, *Representative*
 - (865) 693-1177, ext. 5006
 - kbloomfield@tusculum.edu
- Amanda Lovelace,
 - *Assistant Director/Counselor*
 - (865) 693-1177, ext. 5018
 - alovelace@tusculum.edu



Faces of Student Services

Morristown

gpsstudenthelp@tusculum.edu

Services:

- Academic Advising
- Account Information
- ARCHES Program
- Book Information
- Disability Services
- Sakai Tutorials
- Student ID cards
- Syllabus Information
- Testing Services
- Tutoring/Workshops



Staff:

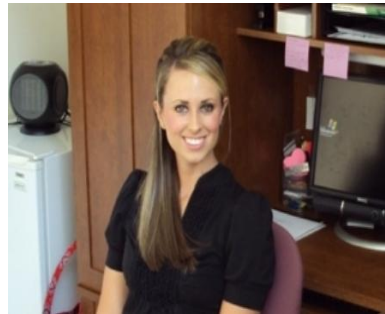
- Kathy Joy, *Academic Advisor*
 - (423) 581-5002, ext. 5903
 - kjoy@tusculum.edu
- Jeremy Jones, *Representative*
 - (423) 581-5002, ext. 5275
 - jljones@tusculum.edu
- Amanda Lovelace,
 - *Assistant Director/Counselor*
 - (865) 693-1177, ext. 5018
 - alovelace@tusculum.edu

Faces of Student Services

Greeneville

Services:

- Academic Advising
- Account Information
- ARCHES Program
- Books/Bookstore
- Disability Services
- Sakai Tutorials
- Student ID cards
- Syllabus Information
- Testing Services
- Tutoring/Workshops



gpsstudenthelp@tusculum.edu

Staff:

- Jane Allen,
 - *Coordinator for Academic Advising*
 - (423) 636-7330, ext. 5602
 - jallen@tusculum.edu
- Sarah Gardner,
 - *Counselor*
 - (423) 636-7330, ext. 5206
 - sgardner@tusculum.edu
- Jeremy Jones,
 - *Representative*
 - (423) 798-1635, ext. 5275
 - jljones@tusculum.edu

Faces of Student Services

Gray (Tri-Cities)

gpsstudenthelp@tusculum.edu

Services:

- Academic Advising
- Account Information
- ARCHES Program
- Book Information
- Disability Services
- Sakai Tutorials
- Student ID cards
- Syllabus Information
- Testing Services
- Tutoring/Workshops



Staff:

- Jane Allen,
 - *Coordinator for Academic Advising*
 - (423) 636-7330, ext. 5602
 - jallen@tusculum.edu
- Jeremy Jones,
 - *Representative*
 - (423) 283-0071, ext. 5275
 - jljones@tusculum.edu

